



GOOD MORNING
Have Good Trading Day

TUESDAY



Price is what you pay.
Value is what you get.

- Warren Buffet



MARKET PULSE

INDIAN INDICES

NAME	CMP	NET CH.	%
SENSEX	23554	+568	+2.47
NIFTY	7162	+182	+2.61

INDIAN ADR'S

SYMBOL	CLOSE	GAIN/ LOSS %
DRREDDY	41.92	Unch
HDFCBANK	57.02	Unch
ICICIBK	5.88	Unch
INFY	16.34	Unch
TATAMOTOR	22.96	Unch
WIPRO	11.19	Unch

FII AND MF ACTIVITY

SYMBOL	In Crs.
FIIs Eq (Provisional)	-1311.59
FIIs Index Future	915.26
FIIs Index Options	442.57
FIIs Stock Future	1239.69
FIIs Stock Options	-7.49
DII's Eq (Provisional)	1987.45

CURRENCY

RBI RATE	15-FEB-2016
RUPEE - \$	68.1348
EURO	76.5086
YEN 100	59.8400
GBP	99.0067

MARKET PULSE

GLOBAL INDICES

NAME	CMP	NET CH.	%
DOW	15973	Unch	Unch
NASDAQ	4337	Unch	Unch
NIKKEI	16166	+144	+0.90
HANG SENG	19224	+305	+1.62
SGX NIFTY	7209	+35	+0.49

WORLD COMMODITIES

FUTURE	U\$\$	CHANGES
CRUDE	30.73	+1.29
NATURAL GAS	1.917	-0.049
GOLD	1196.8	-42.6
SILVER	15.230	-0.560
COPPER	2.0815	+0.0525

WORLD EVENTS

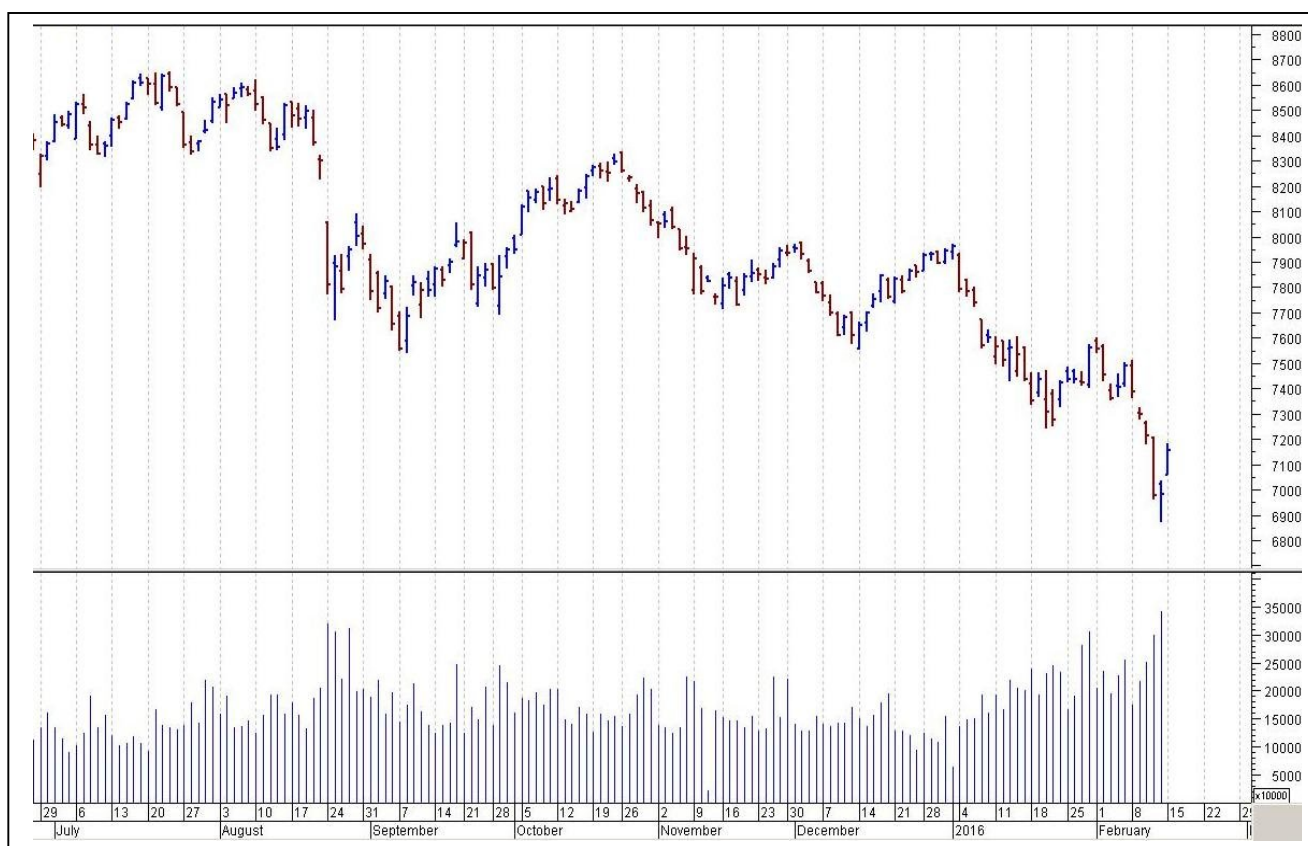
- US:Empire State Manufacturing Index
- Mortgage Delinquencies
- UK:CPI y/y

TOP STORY

- FIPB approves FDI proposal of Cipla worth Rs 145.2 crore. FIPB also approves Glenmark Pharma, DEN Networks' FDI proposals
- ICICI Bank -Bank plans to raise bonds worth Rs 50,000 crore: PTI. To raise funds from bonds in tranches to fund affordable housing and infra projects.
- Mahindra and Mahindra to invest Rs 8,000 crore in automotive plant in Maharashtra over next seven years.
- JSW Group -Group looking to buy distressed port asset in the country
- Power Grid, Adani, others vie for Rs 500 crore transmission project in Rishikesh
- Gati to ink a deal with a logistics start up
- Brigade Group launches Brigade Atmosphere at Devanahalli, Bangalore
- PNB declares United Breweries Holdings as a willful defaulter



NIFTY CHART



MARKET COMMENTARY

Boisterous benchmarks showcased an enthusiastic performance on Monday, by rallying around two and a half percentage points amid strong global cues. Sentiments remained up-beat since start as key bourses opened with huge gap on upside and there appeared not even an iota of profit booking in the session as the benchmarks managed to fervently gain from strength to strength as investors continued hunt for fundamentally strong stocks. Frontline indices not only ended the session near intraday high levels but also recaptured their crucial 7,150 (Nifty) and 23,500 (Sensex) bastions as investors took to hefty across the board buying. For today's trade Nifty likely to trade in the range between 7195 – 7225 in the upper side and 7145 – 7125 in the lower side.

MARKET LEVELS

	CMP	SUPPORT LEVELS				RESISTANCE LEVELS			
NIFTY	7162	7145	7125	7105	7085	7195	7225	7245	7285
USDINR	68.17	68.1	68.05	67.95	67.8	68.25	68.3	68.45	68.55



BULK DEALS (BSE)

SCRIP	CLIENT NAME	BUY/SELL	QUANTITY	PRICE
KMSUGAR	AJAY NARESH AGGARWAL	S	490,000	3.91
RTNINFRA	HSBC GLOBAL INVESTMENT FUNDS MAURITIUS LTD	S	7,922,003	3.25
KIRLOSBROS	SANJAY CHANDRAKANT KIRLOSKAR	B	1,498,398	115
KIRLOSBROS	AMANSA HOLDINGS PRIVATE LIMITED	S	1,500,000	115

BULK DEALS (NSE)

SCRIP	CLIENT NAME	BUY/SELL	QUANTITY	PRICE
RTNINFRA	HSBC GLOBAL INVESTMENT FUND MAURITIUS LIMITED	SELL	11500000	3.25
TEAMLEASE	GOLDMAN SACHS INDIA LIMITED (101380)	BUY	89069	1122.65
SANCO	K S J INVESTMENT COMPANY PRIVATE LIMITED	BUY	72000	33.3
SANCO	MINSHI CREATION PRIVATE LIMITED	BUY	72000	33.3
SANCO	CHP FINANCE PVT LTD	SELL	208000	33.3

SCRIP'S IN F&O BAN

(To resume for normal trading below 80% of market wide limit required)

JISLJALEQS, INDIACEM, WOOCKPHARMA

Initial Public Offering (IPO)

Company Name	Security type	Issue Start Date	Issue End Date	Status
Quick Heal Technologies Ltd	Equity	08-Feb-2016	10-Feb-2016	Closed
TeamLease Services Limited	Equity	02-Feb-2016	04-Feb-2016	Closed



NIFTY 50 STOCKS: SUPPORT & RESISTANCE						
Symbol	Close	Support 1	Support 2	Pivot Point	Resistance1	Resistance2
ACC	1257	1234	1211	1251	1274	1292
ADANI PORTS	191	185	180	190	195	200
AMBUJACEM	198	196	194	198	200	202
ASIANPAINT	859	850	842	861	870	881
AXISBANK	418	402	387	411	427	435
BAJAJ-AUTO	2342	2307	2273	2340	2375	2407
BANKBARODA	139	125	110	133	148	157
BHARTIARTL	319	314	308	322	327	335
BHEL	108	103	99	106	111	114
BOSCH LTD	16447	15995	15543	16398	16850	17252
BPCL	780	768	756	788	800	820
CAIRN	125	121	117	124	128	131
CIPLA	540	531	523	537	545	550
COALINDIA	324	310	296	320	335	345
DRREDDY	2859	2816	2772	2856	2900	2940
GAIL	334	328	322	332	338	342
GRASIM	3472	3402	3331	3456	3527	3581
HCLTECH	827	814	801	823	836	845
HDFC	1080	1070	1060	1086	1096	1112
HDFCBANK	974	967	961	978	984	995
HEROMOTOCO	2507	2481	2455	2510	2537	2566
HINDALCO	67	63	60	66	70	72
HINDUNILVR	805	794	784	808	818	832
ICICIBANK	204	196	188	202	209	215
IDEA	109	107	105	110	112	115
INDUSINDBK	824	817	810	824	831	839
INFY	1092	1086	1079	1093	1099	1106
ITC	304	299	295	303	307	310
KOTAKBANK	625	619	614	628	634	642
LT	1149	1091	1033	1123	1181	1213
LUPIN	1798	1770	1742	1804	1832	1865
M&M	1227	1182	1137	1206	1251	1276
MARUTI	3711	3635	3560	3680	3756	3801
NTPC	125	123	121	125	127	129
ONGC	200	196	192	199	203	205
PNB	77	75	73	77	79	81
POWERGRID	139	138	137	139	140	142
RELIANCE	947	926	905	939	959	972
SBIN	168	161	153	165	173	177
SUNPHARMA	850	841	832	854	863	876
TATAMOTORS	317	303	289	312	326	335
TATAPOWER	60	58	56	59	61	62
TATASTEEL	247	230	213	239	256	265
TCS	2269	2237	2205	2272	2304	2339
TECHM	430	426	422	433	437	444
ULTRACEMCO	2802	2763	2724	2814	2853	2904
VEDL	75	69	63	72	78	82
WIPRO	526	520	514	524	530	533
YESBANK	753	738	723	750	765	777
ZEEL	384	376	368	381	389	393



CORPORATE ACTION / BOARD MEETINGS

NSE Download Ref.No.:NSE/CML/31672:- Trading in Equity Shares of Elder Pharmaceuticals Limited and Era Infra Engineering Limited will be suspended w.e.f February 25, 2016 on account of non-compliance with Clause 41 of the Listing Agreement

NSE Download Ref No :NSE/FAOP/31700:- Introduction of Futures & Options Contracts on 7Additional Individual Securities w.e.f. February 26, 2016: ICIL, PCJEWELLER, TATAELXSI, GRANULES, CUMMINSIND, MCDOWELL-N, KPIT

BOARD MEETINGS

COMPANY NAME	DATE	PURPOSE	RS. PER SH.
TVSSRICHAK	16-Feb-16	Dividend	30
DCMSHRIRAM	16-Feb-16	Dividend	1.2
KKCL	16-Feb-16	Dividend	8
SJVN	16-Feb-16	Dividend	0.63
GAIL	16-Feb-16	Dividend	2.5
MAYURUNIQ	16-Feb-16	Dividend	0.85
CARBORUNIV	16-Feb-16	Dividend	1
PFC	16-Feb-16	Dividend	4.5
SUNCLAYLTD	16-Feb-16	Dividend	21
SUNTV	17-Feb-16	Dividend	
GULFOILLUB	17-Feb-16	Dividend	3
PRECWIRE	17-Feb-16	Dividend	1.5
IFCI	17-Feb-16	Dividend	
PAGEIND	17-Feb-16	Dividend	21
JMA	17-Feb-16	Dividend	
BHARATFORG	17-Feb-16	Dividend	3
MOIL	17-Feb-16	Dividend	3
HGS	17-Feb-16	Dividend	3.75
TECHNO	17-Feb-16	Dividend	3
ARROWCOAT	17-Feb-16	Dividend	3
CENTUM	17-Feb-16	Dividend	1
MOLDTKPAC	17-Feb-16	Face Value Split From Rs 10 To Rs 5	

NEWS & RUMOURS:

- Gold (Spot Dollar) major support = \$1182/\$1150 & Resistance = \$1240/\$1267.
- Crude oil range->\$25 to \$35.
- Stocks Get Central Bank Lift as Yen Retreats; Oil Extends Rally: - It's risk back on, and it's all about stimulus. Stocks in Europe headed for the biggest two-day gain in more than four years, while oil advanced and China's yuan jumped by the most since a dollar peg was scrapped in 2005, after People's Bank of China Governor Zhou Xiaochuan expressed faith in the economy. Demand for havens such as gold and the yen declined.
- Dollar remains broadly higher in quiet trade: - The dollar remained broadly higher against the other major currencies on Monday, as Friday's upbeat U.S. retail sales data continued to support and as comments by Japanese Prime Minister Shinzo Abe weighed on the yen. Trading volumes were expected to remain quiet on Monday with U.S. markets closed in observance of Presidents' Day.
- Gold prices drop more than \$30 as global stocks recover: - Gold futures fell sharply in Europe trade on Monday, as the metal's safe-haven appeal was dampened amid a recovery in global equity markets. Gold, the pacesetter among commodities this year, is coming back to Earth.
- Natural gas prices slide to 8-week low on warm weather forecasts: - U.S. natural gas futures sank to an eight-week low on Monday, as updated weather forecasting models called for higher-than-normal temperatures later in February. Bearish speculators are betting on the mild weather reducing late-winter demand for the heating fuel. The heating season from November through March is the peak demand period for U.S. gas consumption.

TRENDS & OUTLOOK – DATE: 16- Feb- 2016

PRECIOUS METALS:

COMMDITY (MCX)	S2	S1	PIVOT POINT	R1	R2
GOLD (Apr)	28150	28420	28740	29030	29390
SILVER (Mar)	34800	36120	37000	37966	39040

BASE METALS

COMMDITY (MCX)	S2	S1	PIVOT POINT	R1	R2
COPPER (Feb)	301	307	312	317	321
ZINC (Feb)	110.50	113.20	115.70	118.20	120.75
LEAD (Feb)	120.20	123.45	126.30	128.50	131.20
NICKEL (Feb)	527	543	559	583	597

ENERGY

COMMDITY (MCX)	S2	S1	PIVOT POINT	R1	R2
CRUDE OIL (Feb)	1850	1919	2030	2140	2265
NATURAL GAS (Feb)	122	127	132	136	141

DATE TALKS : TODAY'S ECONOMIC DATA :

Monetary Policy Meeting Minutes of AUD, CPI of GBP, German ZEW Economic Sentiment, ZEW Economic Sentiment, Empire State Manufacturing Index, NAHB Housing Market Index.



Registered Office

Indira House, 3rd Floor, 5 Topiwala Lane,
Opp. Lemington Road Police Station, Grant Road (East), Mumbai - 400007.

Corporate Office

'Ramavat House' E-15, Saket Nagar, Indore - 452018 (M.P.)

Customer Care

Tel: +91-731-4097170/ 71/ 72/ 73/ 74 M. +91 93031 72345

Email: customercare@indiratrade.com www.indiratrade.com



INSTITUTIONAL DEALING UNIT

Africa House, 5, Topiwalla Lane, Lamington Road, Mumbai, 400007

Tel: +91 22 30080678 Fax : +91 22 23870767 Email : ie@indiratrade.com

Disclaimer

This report is for private circulation within the Indira Group. This report is strictly confidential and for information of the selected recipient only and may not be altered in any way, transmitted to, copied or distributed, in part or in whole, to any other person or to the media or reproduced in any form. This report should not be construed as an offer or solicitation to buy or sell any securities or any interest in securities. It does not constitute a personal recommendation or take into account the particular investment objectives, financial situations, or any such factor. The information, opinions estimates and forecasts contained here have been obtained from, or are based upon, sources we believe to be reliable, but no representation of warranty, express or implied, is made by us to their accuracy or completeness. Opinions expressed are our current opinions as of the date appearing on this material only and are subject to change without notice.